



ALLNIC AUDIO

L-7000 LINE-STAGE PREAMPLIFIER



OWNER'S MANUAL

ALLNIC AUDIO

L-7000 LINE-STAGE PREAMPLIFIER

Thank you for purchasing the Allnic Audio L-7000 Line-Stage Preamplifier. We are certain your trust in Allnic Audio and its dealers worldwide, as well as your appreciation for the sound of this high-quality device, will be rewarded by its excellent operation for years to come.

Please read this entire manual before you connect the L-7000 Line-Stage Preamplifier to the other components of your system and the wall outlet.

Audiomentors (Allnic Audio marketing company)

**415, Daeduck Plaza
19-4 Sunae-dong, Bundang-gu,
Seongnam-si, Gyeonggi-do,
13595 S.Korea**

Direct Telephone: 0082-31-716-3311

email: audiomentors@naver.com

Website: www.audiomentors.co.kr

***** Information and specifications for the Allnic Audio product described in this manual are subject to change without notice.**

TABLE OF CONTENTS:

INTRODUCING THE L-7000 LINE-STAGE PREAMPLIFIER	4
WHAT'S IN THE BOX?	6
SAFETY	7
CLEANING	7
Chassis	
Connectors	
INITIAL SET-UP	
Location, Location, Location	7
Power Connection	8
Inputs	8
Outputs	8
Phase Switch	9
Remote Control	9
INITIAL POWER ON	9
OPERATION	10
CURRENT METERS	10
TUBES	10
SPECIFICATIONS	11
WARRANTY	12
FIGURES	13

Please read about **SAFETY** before you attempt to use the L-7000 Line-Stage Preamplifier - we care about our customers and the equipment, and we want you to enjoy this product for a long time!

INTRODUCING THE L-7000 LINE-STAGE PREAMPLIFIER

Immerse yourself in the original recorded space. The L-7000 is a single gain stage, transformer-coupled, remote controlled line-stage pre-amplifier. It uses the 300B direct-heated triode as a voltage regulator. The 300B has justly won the reputation for being a superb output tube in single-ended amplifier, but it will take some rethinking to imagine this great tube in a role outside the signal path. The benefit the 300B brings as a voltage regulator is its ability to pass a fair amount of current at low cathode-to-plate voltages, the result of having a low Rp.

The L-7000 offers world class, holographic sound-staging combined with incredible resolution, clarity, micro-dynamics, and drive. Instrument and vocal tone and timbre are lifelike; placement of instruments and bodies in three dimensions startling, life-size, and addictive. The L-7000 has no voice of its own. It is silent, except for the music emanating from the blackest of backgrounds. The outstanding sonic quality is matched by the simple elegance, flexibility and ergonomic functionality of the casework and connection options. Few pre-amplifiers can compete.

The L-7000 is a reference level line-stage pre-amplifier. Like all Allnic Audio products, it uses permalloy (iron and nickel alloy) for its transformer cores. Allnic is grateful to Mr. G.W. Elmen of Western Electric for inventing permalloy for transformer core use, and in so doing, providing an enormous service to recorded music listeners everywhere.

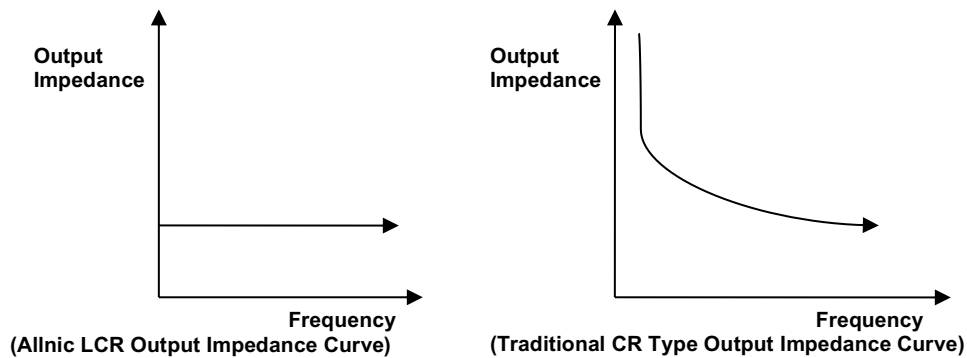
The L-7000 has the following features:

- Line output transformer coupling – The L-7000 is “transformer coupled”, using transformers that have been upgraded from those in the L-3000. In tube amp circuitry, there are two coupling methods; one is capacitor coupling and the other is transformer coupling. Capacitor coupling is the traditional, low cost method. It is somewhat stable but transfers only voltage, not wattage (i.e., not real energy). With transformer coupling, about 90% of real wattage is transferred (there is still a transformer loss of about 10% of wattage – voltage is not affected).

Transformer coupling is superior to capacitor coupling. However, all the advantages of transformer coupling depend on the quality of the transformer and on the choice of tubes. Allnic Audio manufactures its own transformers and uses what it views to be the best core material, Permalloy. Allnic Audio's unprecedented, wide (16Hz ~ 75kHz, -3db), low distortional, and ultra-flexible (up to 50kHz square wave response) output transformer helps Allnic Audio to realize the ideal transformer coupled preamplifier. Of course, gain tubes are also carefully selected for three critical factors for function with the Permalloy output transformers: high gm, low internal resistance and high mu.

Constant and low output impedance – One of the benefits of transformer coupling is that it facilitates constant low output impedance. Low output impedance is critical to the design of a good preamplifier. The L-7000 has a 120 ohm (120Ω) constant output impedance at all frequencies. In capacitor coupling (C-R coupling), a “cathode follower circuit” is usually used to lower output impedance. Unfortunately, this method of lowering output impedance is

accompanied by high distortion and has an "L" shaped output impedance curve. Please compare the two graphs below, especially for low frequency response.

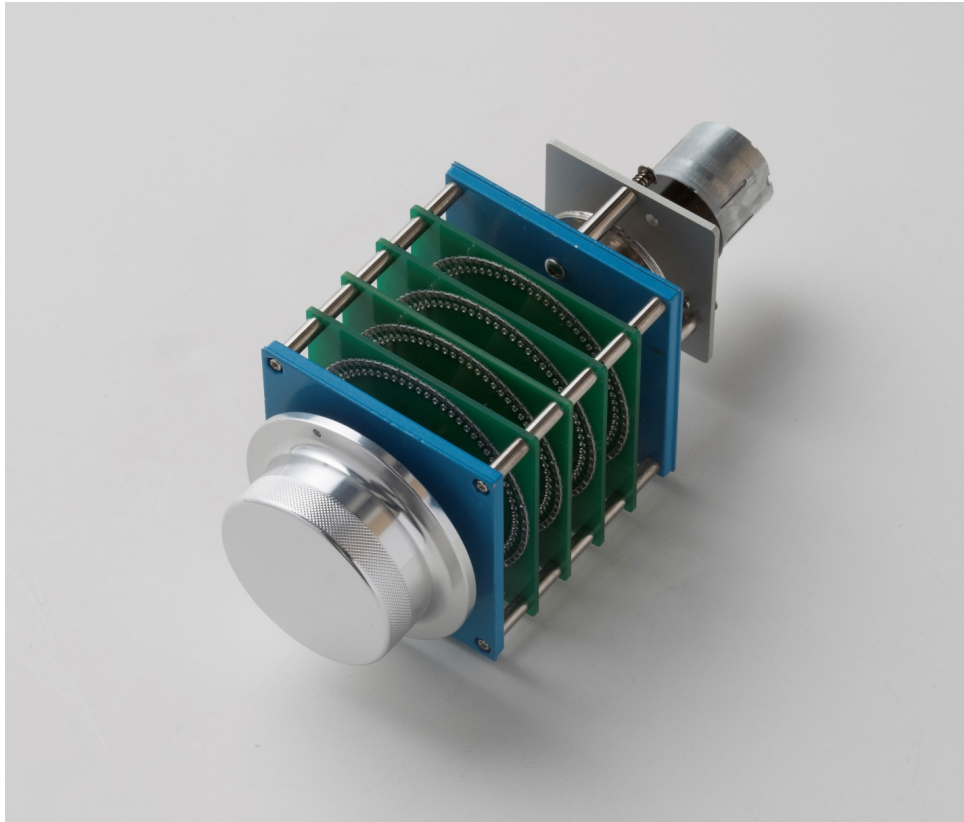


- No negative feedback design
- Advanced tube technology voltage regulation - For quieter and more dynamic operation, the L-7000 has an ultra-high speed automatic voltage regulation circuit, utilizing vacuum tubes, including the 300B triode. This also protects the amplifying tubes from change in the AC line supply and copes with any abrupt, internal current demand.
- Precision attenuator volume control – The L-7000 does not employ a digital IC volume control or a low-cost carbon film volume control with a motor. The L-7000 uses the WORLD’S FIRST 61 step, constant impedance, “bridged” type attenuator, standard on all units produced after May 2019. Allnic’s new attenuator is now the most sophisticated on the market, and we believe, without a doubt, also the absolute best sounding. With fixed impedance and no ($\pm 0\text{db}$) channel imbalance at any volume level, this revolutionary and currently unique, oil clutched, motorized attenuator will astound users with its elevation of the fidelity and purity of any system in which it finds a home.
- Pure Class A operation
- Pure balanced output stage
- As are all Allnic Audio products, the L-7000 is fully RoHS (EU Reduction of Hazardous Substances regulation) compliant in construction and materials

A world’s “first of its kind” for Allnic Audio

61 STEP CONSTANT IMPEDANCE BRIDGED TYPE ATTENUATOR

Allnic Audio’s newly developed 61 step constant impedance bridged type attenuator, a world’s first, is installed inside the L-7000, which contributes to the L-7000’s outstanding dimensional sound. It does so by ensuring that the attenuator’s impedance is absolutely constant across all frequencies. This is in addition to the zero channel imbalance, a standard feature of Allnic’s in-house produced, motorized attenuators.



The Allnic 61 step constant impedance bridged type attenuator

WHAT'S IN THE BOX?

Please check that the shipping box contains the following:

- One (1) Allnic L-7000 Preamplifier – in natural aluminum or black, depending on your order specification
- One (1) power cord
- One (1) remote control
- Two (2) x AAA batteries for the remote control
- One (1) Owner's Manual

Note:

- 1) The L-7000 ships with the tubes installed.
- 2) The L-7000 will work with most IEC type aftermarket power cords. The Allnic ZL-3000 and ZL-5000 power cables will make an excellent match. Of course, only you can determine the power cord that works most synergistically with the L-7000 in your system.
- 3) **Be sure the L-7000 is labeled for the AC voltage of your location. If it is not, DO NOT connect it to your AC outlet. Please contact your Allnic dealer.**

We advise that you keep the box and other packing materials that your L-7000 came in. It will be useful if you sell your L-7000 or in the unlikely event you need to ship it for service.

SAFETY

- **CAREFULLY and SLOWLY remove ALL cardboard and Styrofoam cushioning material inside the tube chimneys before operation..**
- Disconnect the power cord by pulling the plug, not the cable.
- Keep the power cord away from any heat source.
- Keep the unit away from liquids – do not allow any liquid to enter the interior of the unit.
- When the unit is moved from a cold to a warm environment, allow sufficient time for any condensation to evaporate before plugging the unit into an AC connection.
- Do not attempt any repairs.
- Do not remove the chassis cover without specific authorization from your Allnic dealer.
- See the notes on “Location, Location, Location”.

CLEANING

A. Chassis and glass

Use only a soft, lint-free cloth dampened slightly with water only (NO cleaning fluids!) to clean the faceplate, meter glass and chassis.

B. Connectors

You may use any good quality contact cleaner recommended for such applications to clean the contacts from time to time as you deem appropriate.

INITIAL SET-UP

A. LOCATION, LOCATION, LOCATION

Like all audio products using tubes, the Allnic Audio L-7000 needs to be placed on a solid stand in a location that provides for good air circulation around the preamplifier.

- DO NOT cover the top of the preamplifier.
- DO NOT place the unit on carpet or foam.
- DO NOT subject the unit to knocks and shocks as you move it around. This advice is meant particularly for those who may want to place the L-7000 on a set of after-market isolation feet or similar devices. Dropping one side of the L-7000, or the whole unit, is not a good thing.
- DO NOT place the unit near a strong light or heat source.
- DO NOT place anything heavy on the unit.
- DO NOT allow rubber or vinyl materials to rest on the unit's chassis for long periods of time. This could discolour the metal.
- DO place the unit on a shelf or stand that is stable and not subject to vibration or sudden shock.
- DO consider using a high quality power cord and inter-connects, both inputs and outputs. The L-7000 is a highly sensitive piece of electronic equipment designed for neutrality and will output what you put into it. Allnic's Zero Loss Technology cables will work synergistically with the L-7000.

- DO try to place the L-7000 away from major sources of RFI and EMI; though well shielded, the L-7000 will function best away from large power transformers and other sources of such interference.

B. POWER CONNECTION

The L-7000 uses a standard three prong male 15 amp IEC connection for AC input. You need to use a power cord with a female three prong 15 amp IEC connector at one end.

To the left of the IEC connector (facing the left side of the unit as in Figure 1), there is a power on-off switch. Leave this switch in the OFF position – that means the switch is pressed “down” at the bottom - while you make all initial connections.

The L-7000 will be set internally for your location’s electrical system characteristics. Please check the setting for electrical input on the label on the rear of the unit to confirm that your L-7000 matches your location’s electrical system. For North American customers, the L-7000 is set internally for AC 110/120 volt – 50/60 Hz. For customers in other regions, the unit is set for 230/240V – 50/60 Hz operation. There is no way to change to another AC setting.

C. INPUTS

There are five (5) inputs. Line 1 and Line 2 are balanced connections (XLR type connectors). The remaining 3 line inputs are RCA type, single-ended connections. None of the inputs is intended especially for connection to any particular device.

NO PHONO STAGE - The L-7000 is a line-stage preamplifier and does NOT have a built in phono preamplifier section. You will need a phono preamplifier if you want to use a turntable with the L-7000. You can connect your phono preamplifier to any of the five inputs, provided you have the appropriate types of connections or adaptors.

The L-7000 has been designed and manufactured to work most synergistically with Allnic Audio phono preamplifiers, pre-preamplifiers, equalization and power amplification products, and ZL Technology cables.

D. OUTPUTS

The L-7000 has three pairs of outputs. Two (2) output pairs are balanced (i.e., separate ground), using XLR connectors; one (1) pair is single-ended unbalanced, using RCA type connectors.

On the back panel of the L-7000 there is a switch to select either the balanced or single-ended connections. This selection switch is at the top centre of the rear panel and labeled “unbalanced output” (see Figure 2). Please set the output selection switch to the output connection you are using. If you set the switch to “balanced” (i.e., XLR – switch pushed to the right, looking from the rear) and then connect your cables to the RCA outputs (“main out 2”), audible hum will be introduced.

You may use the balanced and single-ended RCA outputs at the same time; for example, if you run one pair to your stereo amplifier and the other to a powered subwoofer (or a pair of them). In such a case, set the output selection switch to unbalanced (RCA – switch pushed to the left). This will avoid the introduction of hum.

E. PHASE SWITCH

On the right hand side of the top deck of the chassis, there is a phase switch. This switch is a 180 degree phase switch; phase is either normal or inverted one hundred percent, depending on the switch position. On initial connection, set the switch to normal. Depending on the phase your sources output and their facilities with regard to phase, you may want to switch to inverted phase sometimes. Phase issues generally will result in lack of bass and/or focus of the stereo image (Please see Figure 5).

F. REMOTE CONTROL

The remote control provides the ability to remotely:

- Select the line source input using either the numbered selector buttons (1 to 5) or the channel up/down arrow buttons (Please see Figure 3).
- Control the volume level using the right (louder) and left (quieter) arrow buttons adjacent to the channel arrow buttons.
- Mute the volume using the button labeled "MUTE". To raise the volume again after muting, press the Mute button to take the volume level to where it was prior to muting. In Mute mode, the light above the "operate" button on the front panel of the L-7000 will not be illuminated; it will illuminate when the L-7000 is unmuted again.
- Use the red power on/off button in the top left-hand corner of the remote control to power the L-7000 on and off.

INITIAL POWER-ON

Once you have your L-7000 in place and all connections have been made to your sources and amplifier(s) and the power cord is installed and plugged into an AC receptacle, you are ready to turn on the power for your L-7000. Before you power up the L-7000, though, be sure you have:

- **CAREFULLY AND SLOWLY removed ALL the cardboard cushion materials from inside the tube chimneys**
- **ensured the batteries are in the remote control – if not, insert the batteries (by removing plate on the bottom of the remote control).**
- selected the output connections that you want to use, single-ended (RCA) or balanced (XLR), on the switch at top centre on the back of the preamplifier
- turned the volume down on or muted the L-7000
- checked that all your connections are snug

Also, be sure you have manually turned the volume control on the front panel to the extreme counter-clockwise position (minimum volume).

Push the power on-off switch to the left of the IEC connector (facing the left side of the unit as in Figure 1) so it is in the "on position". That will power up the L-7000. From this point on, you need only use the far left hand button marked "power" on the front panel or the power button on the remote control to turn the L-7000 on and off. Once the power has been turned on, the following will happen on the front panel (Please see Figure 4):

- the light above the "power" button will illuminate
- the meters on the front panel will illuminate

- the light over the line source button that is depressed will illuminate
- after about 40 seconds, the light over the “operate” button will illuminate. The L-7000 has a “soft start” delay for the tubes in order to extend tube life.

The Allnic Audio L-7000 is now ready for operation. At this point, you can power on your sources and, finally, your stereo power amplifier or mono-blocks.

OPERATION

From this point on, operation is straight-forward. All functions are controlled from the front panel or the remote control. Of course, BE CAREFUL about differences in gain between your sources. Generally, disc players and tuners will have greater gain than phono stages. That means the volume setting for listening to your turntable might be too high for listening to CDs or streaming devices.

To avoid surges to the speakers, it is best to change from input to input only with the “operate” button set to mute (the light above the button will not be illuminated when the button is in the “mute” position).

When you are finished listening, turn off your stereo power amplifier or mono-block amplifiers. Then turn off the L-7000 by depressing the power button on the front panel. The power switch on the left side panel should stay in the “on” position – this will keep key circuitry warm, and your L-7000 will be ready to play when the soft-start turns on the L-7000 next time you want to listen. Turn off your sources last.

CURRENT METERS

These illuminated meters indicate the current supply to the gain tubes in the L-7000. They are indicators of failure or damage to the function of the unit. There is one meter for each channel. The needle should be between the two parallel lines just left of centre on the meter face. Any failure of the tubes or circuits in one or the other of the L-7000’s channels is indicated by the needle on the meter for the respective channel moving out from between those two parallel lines.

- If the needle has moved to the left of the parallel lines on a meter, it means that the gain tube (E810F) for that channel is failing.
- If the needle on either meter moves to the right of the parallel lines, it means that one or both of the voltage regulator tubes (300B or 5654) for that channel is failing.

In the case of any failure indicated by the meter, please contact Allnic Audio or its authorized representative for assistance.

TUBES

The L-7000 uses the following tubes (see Figure 5):

- Two (2) x E810F
- Two (2) x 300B
- Two (2) x 5654

All consequences of changing or attempting to change tubes are borne by the user unless by express agreement between the owner and Allnic Audio or its authorized representative. Allnic Audio and its authorized representatives are not liable in any way whatsoever for any injury or loss incurred by the user or for damage to the L-7000, any of its parts, or tubes or replacement tubes resulting from the user changing or attempting to change tubes.

SPECIFICATIONS

FOR THE ALLNIC AUDIO L-7000 LINE-STAGE PREAMPLIFIER

- Inputs: Line level × 5 pairs:
Balanced (XLR) × 2
Unbalanced (RCA) × 3
- Outputs: 3 pairs:
Balanced (XLR) × 2 pair
Unbalanced (RCA) × 1 pair
- Input Impedance: 10kΩ Balanced/Unbalanced
- Frequency Range: 20Hz ~ 20kHz (FLAT)
16Hz ~ 75kHz (-3dB)
- Voltage Gain: +18dB
- THD (1kHz): Output 0.3V, 0.06%
Output 1.0V, 0.16%
- S/N Ratio: -90dB (CCIR, 1kHz)
- Maximum Output: 20V RMS (Non-clipping)
- Output Impedance: 120Ω Constant
- Power Consumption: 30W at 110/120V / 60 Hz
- Tubes: E810F (electrically equivalent to 7788) × 2 (gain)
300B × 2 (no equivalent) voltage regulator
5654 (equivalent to 6AK5, 6AK5W, EF95) × 2 (voltage error detector)
- Fuse: AC 3A, 250V slow-blow for 110/120V regions
AC 2A, 250V slow-blow for 230/240V regions
- Tube chimney screws: 2mm Allen head
- Dimensions: 430mm (16.95 inches) (W)
410mm (16.15 inches) including handles (D)
207mm (8.15 inches) (H)
- Weight: 18 kg (39.6 lbs) unpacked.
24.75 kg. (54.6 lbs) packed in original shipping material

WARRANTY

FOR WARRANTY SERVICE, PLEASE CONTACT YOUR AUTHORIZED ALLNIC DEALER.

Except for the tubes, this Allnic Audio product is warranted against materials and manufacturing defects only for two (2) years from date of purchase. The tubes in this product are warranted against materials and manufacturing defects only for six (6) months from date of purchase. Date of purchase is the date indicated on the invoice issued by Allnic Audio or its authorized representative for original purchase of the new product. The warranty does not cover any damage occurring during product shipment at any time, nor any damage occurring as a result of any of this product's owner's or owners' negligence or willful mistreatment. Failure to operate or care for this product in accordance with instructions in this manual will be deemed negligent. For the warranty to be valid, this product must be returned first to Allnic Audio's authorized representative for warranty service prior to any unauthorized attempt to repair or modify it. Any repair done to or modification of this Allnic Audio product at any time performed without specific authorization from Allnic Audio or its authorized representative will void the warranty. Allnic Audio and its authorized representatives shall be the sole determiners of whether the warranty has been voided. Provided that the warranty has not been voided, the warranty is transferable for the balance of the original purchaser's warranty period.

The warranty covers parts and labour only. If required for warranty service, shipping of this product to and return to product owner from an authorized Allnic representative will be at product owner's sole cost. In the case of required factory warranty service, shipping to Korea shall be at product owner's sole cost. Provided that Allnic has determined that the warranty is not void, Allnic will pay the cost of return shipping to product owner. If Allnic determines that the warranty is void, return shipping to product owner will be at product owner's sole cost.

After expiry of the applicable warranty period or if the warranty is void, Allnic Audio and its authorized representatives are not responsible for nor obligated in any manner whatsoever to undertake, or to cover or reimburse the costs of any repairs or modifications to this product.

The warranty does not cover and Allnic Audio and its authorized representatives are not responsible for any incidental costs or damages to the person or property of original purchaser, any subsequent owner of this product, or any third party occurring as a result of any malfunction or misuse of this product however and whenever caused.

FIGURES

Figure 1 – L-7000 Left Side Panel View

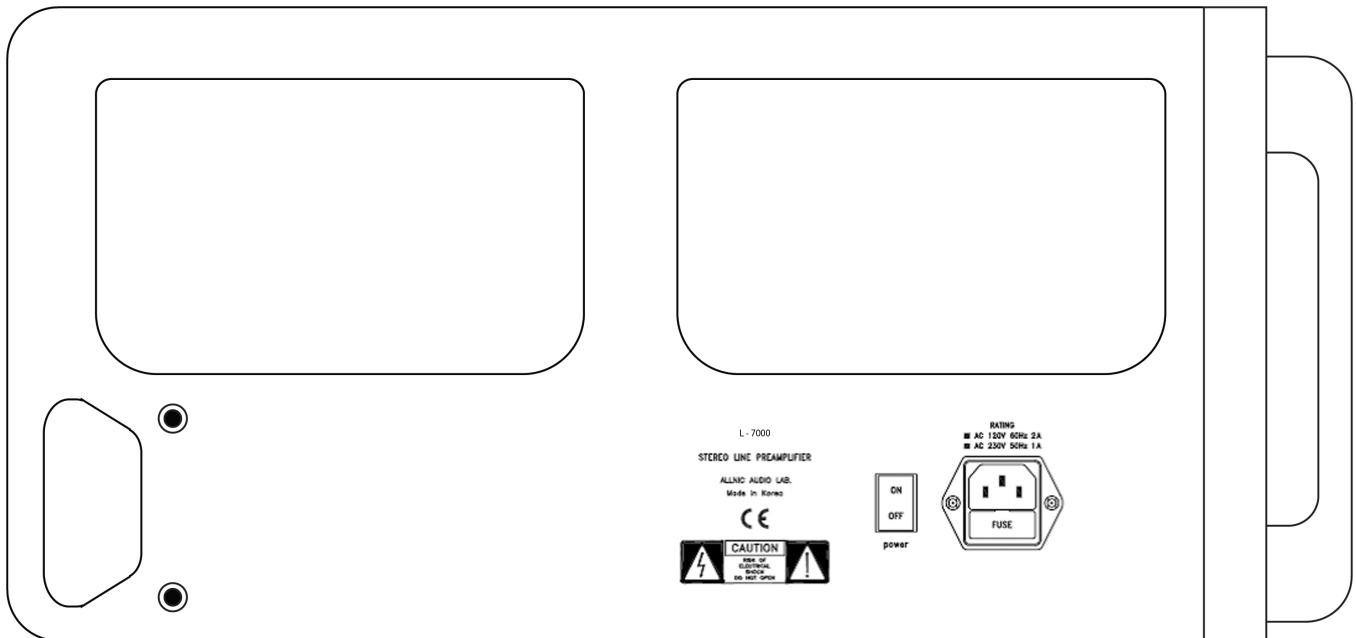


Figure 2 – L-7000 Rear Panel View

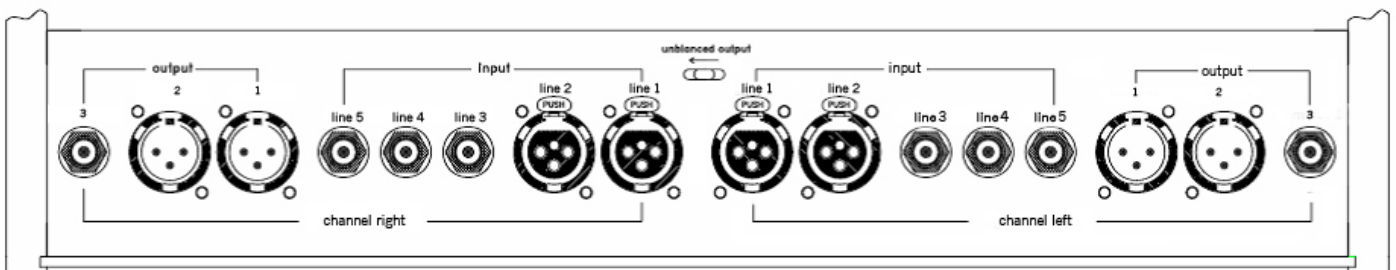


Figure 3 – L-7000 Remote Control

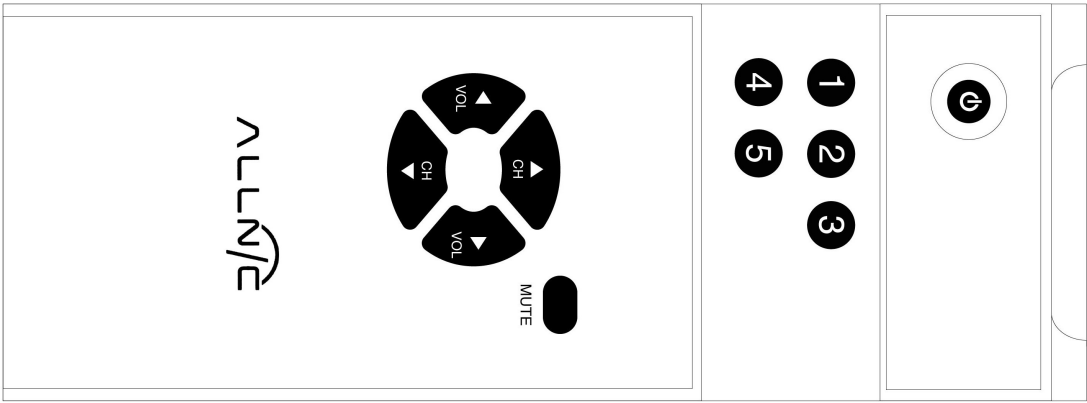


Figure 4 – L-7000 Front Panel View

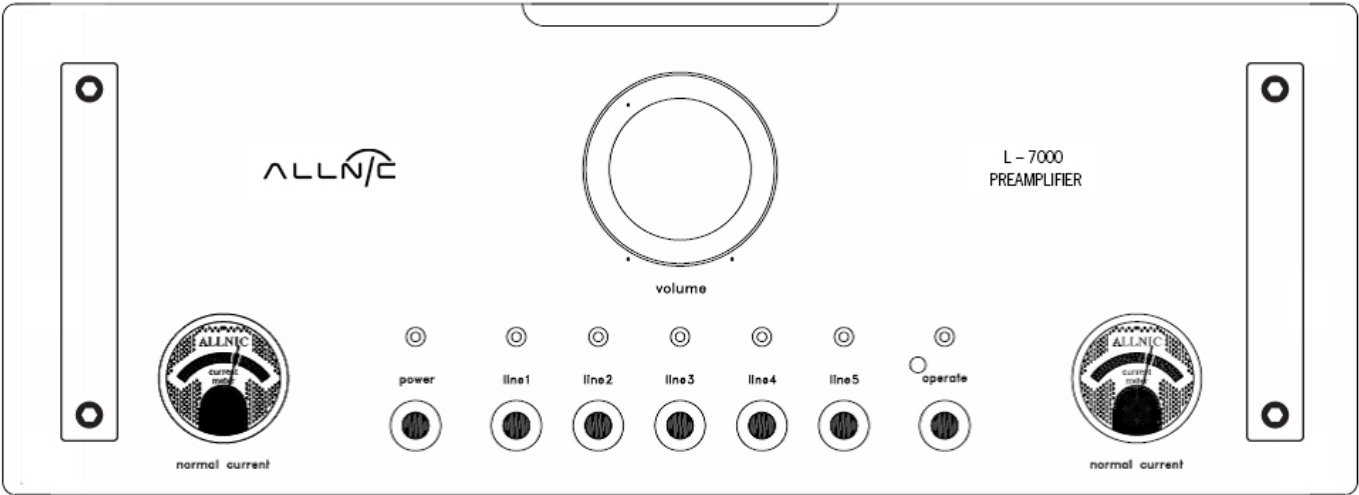


Figure 5 – L-7000 Top View

